

Company Profile



FUJI CORPORATION

Enriching the lives of those in the world around us

- Ever-evolving smartphones
- High-speed data sustaining social infrastructure
- Environmentally friendly electric vehicles
- Task load reducing robots
- Non-stop machinery
- Fuji technology breathes life into everyday conveniences

- For more comfort and convenience
- For new surprises that await us every day
- For a future that brings smiles to the faces of people around the world
- We at Fuji Group are tackling societal issues and supporting the enrichment of people's lives



innovative spirit

Creating new value with world-first and industry-first technologies and ideas

1959 -

The beginning of innovation and advances in automation

Mamoru Sakagami founded Fuji Machine Mfg. Co., Ltd. (previous company name). An original idea in the form of a revolutionary hydraulic lathe for mass production started us down this path of influencing manufacturing around the world and furthering the idea of automation in industrial equipment.

1978-

Reaching new heights: Placement technology

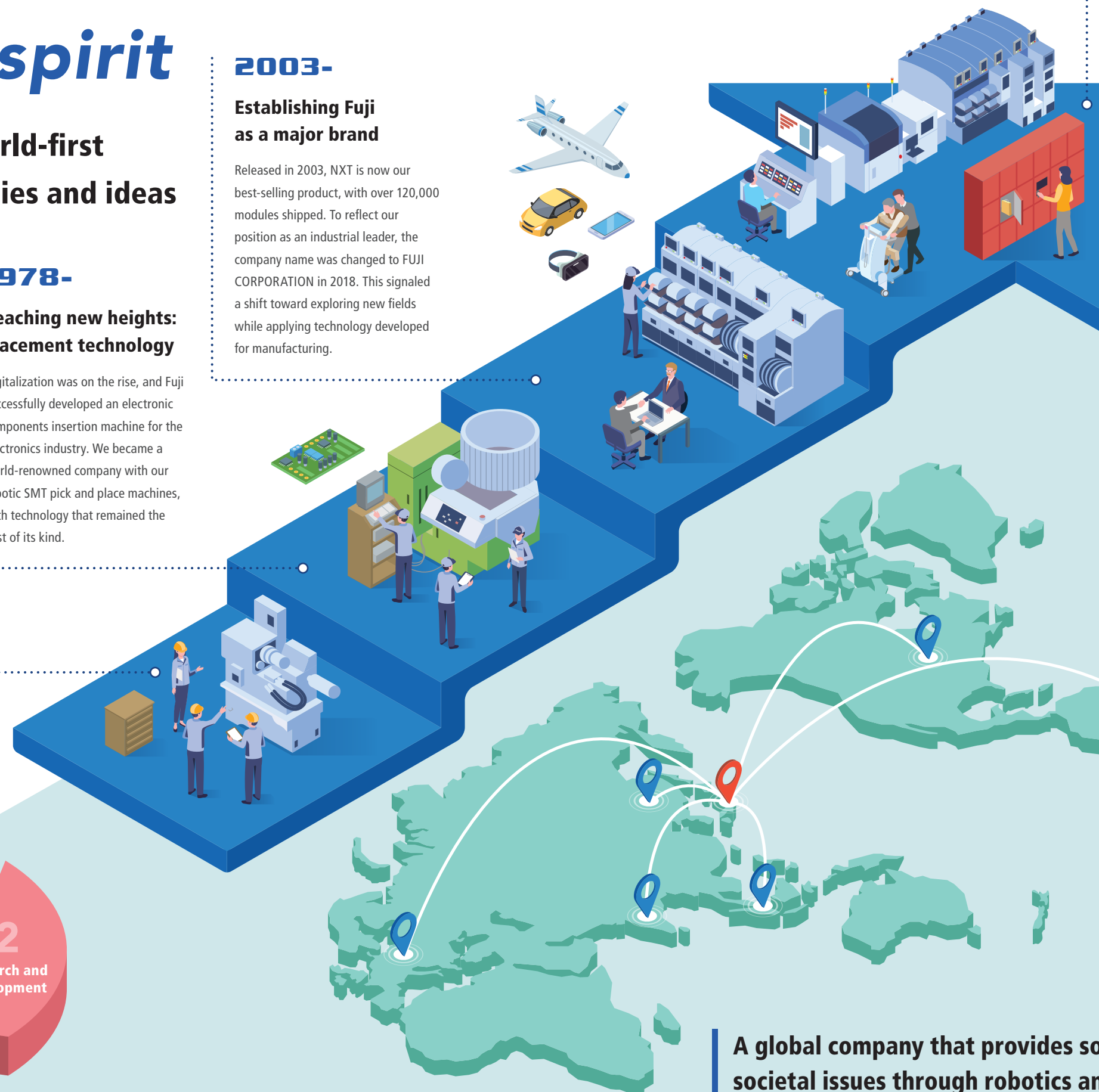
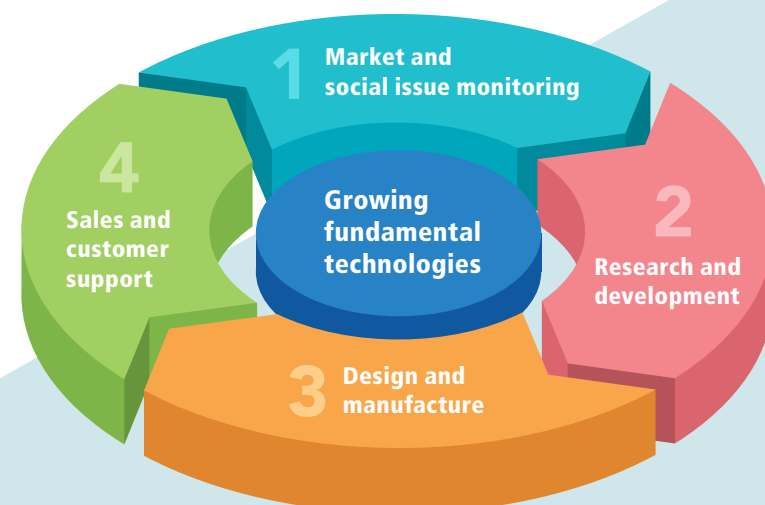
Digitalization was on the rise, and Fujitsu successfully developed an electronic components insertion machine for the electronics industry. We became a world-renowned company with our robotic SMT pick and place machines, with technology that remained the best of its kind.

2003-

Establishing Fuji as a major brand

Released in 2003, NXT is now our best-selling product, with over 120,000 modules shipped. To reflect our position as an industrial leader, the company name was changed to FUJI CORPORATION in 2018. This signaled a shift toward exploring new fields while applying technology developed for manufacturing.

Manufacturing structure responding to customer voices



2023-

Taking on societal issues

Based on the robotics technology that we have cultivated over the years, we are developing factory solutions that make factories smarter, and products that resolve issues faced by society and enrich people's lives.

Employees worldwide

Approx. 3,000

Patent registrations

7,000+

Global network

100+ locations

Sales records

60+ countries

A global company that provides solutions to societal issues through robotics and automation technology

Fuji's advanced solutions support everyday life across a variety of fields

Monozukuri

For a convenient and comfortable society

Electronics are now integral to everyday life. Countless electronic components are placed on panels that enable items for making daily life more convenient. Fuji's high-speed, high-precision robots support the production of everyday electronics.

Issues being addressed by Fuji

Automation and labor saving	Manufacturing with no waste
Digital transformation	Environmental consideration



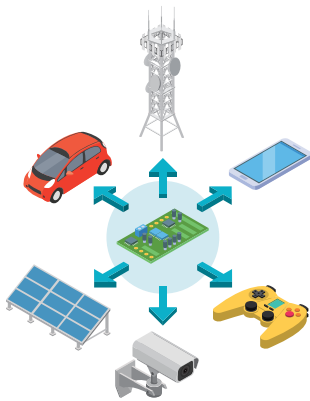
Electronics assembly evolved Smart factory solutions



We provide an electronic components assembly system that operates automatically and seamlessly to support the creation of comfortable working environments, for enriched and convenient lifestyles.

Applications in which PCBs are used

- Automobiles
- Smartphones and wearables
- Computers and tablets
- Home appliances
- Gaming and VR
- Antenna at 5G base stations
- Servers and network devices
- Solar panels and batteries



Lifestyle

For a society that is easy to live in

Technological improvements bring more convenience. Fuji's advanced technologies are being applied to create a society that is kind to everyone, through products and services that respond to how people want to live.

Issues being addressed by Fuji

Solving the last mile problem	Back injuries in caregiving
Labor shortages	Non-contact services

Mobility support robot Hug



This robot supports transfers such as getting from a bed to a wheelchair, and can also support maintaining a standing position, making it ideal for caregiving situations.



Places to be used

- At-home care
- Care facilities (nursing homes, health care, and long-term care for the elderly)
- Facilities for persons with disabilities
- Hospitals (university hospitals, rehabilitation hospitals, etc.)
- Educational institutions

Public stocker system Quist



This product enables non-contact delivery and receipt of goods and packages, helping to create a safe and secure environment.



Usage situations

- In-store pickup of products purchased online
- Pickup of prescription drugs
- Pickup of duty-free goods
- Pickup of packages and parcel delivery
- Management of in-house equipment, tools, and supplies
- Lost and found pickup point

A sustainable and thriving society that brings smiles to the faces of those who live there. To make such a future a reality, Fuji Group is committed to having sustainability management practices at the center of its daily business practices.



Sustainability at Fuji

- » Comply with laws, regulations, and rules
- » Provide products and services for a more convenient and comfortable society
- » Foster strong teamwork while respecting individuality
- » Pioneer new business fields that will lead us into the future
- » Conduct corporate activities while being environmentally conscious
- » Prohibit all forms of discrimination while respecting diversity and human rights



Fuji Group is committed to the Sustainable Development Goals (SDGs) proposed by the United Nations and aims to realize a sustainable society through the achievement of the SDGs.

Learn more about sustainability at Fuji



Social development through innovation

We have an open innovation base in Silicon Valley in the United States, where we seek out innovative technologies and services that are not yet widely known about. In addition to our in-house technological development, new innovations are being created through this base by encountering new technologies that are able to work in synergy with our own technology. With these new innovations, we quickly create products and services that meet the needs of the times, contributing to the growth of society.



Meeting at the Plug and Play Tech Center in Silicon Valley

Initiatives for developing talent

Believing that people are the driving force behind a company's sustainable growth, we strive to create a workplace where each and every employee can grow and feel fulfilled by introducing skill development and self-development courses tailored to suit their roles, abilities, and interests. In addition, we provide children, the future leaders of our society, with opportunities to think about their own future careers through our factory tours and work experience programs. Our efforts also include lending our SMT equipment to overseas higher education institutions free of charge to foster the development of human resources who will play an active role in the electronics industry.



Showroom tour during visit by Australian high school students



Fuji engineers check the operation of the robot

Initiatives for the environment

We strive to reduce CO₂ emissions from business activities by using renewable energy and energy-saving equipment. In product development, we are committed to the development of innovative products that can contribute to the preservation of the environment by improving energy efficiency in our products and developing electronics 3D printers with a unique manufacturing process that significantly reduces waste liquid and waste materials generated in manufacturing electronic circuit boards. To realize a decarbonized society, we are also focusing on visualizing and reducing CO₂ emissions in cooperation with group companies and business partners.



Environmentally friendly, energy-efficient factories that use geothermal and solar power generation



Eco-friendly machine tool ANW-300III

Local community
THANK



"teracoya THANK" for nurturing future innovators who will go out into the world, and "thirty nine cafe", a new base for local revitalization. These two pillars make up the THANK complex, through which we strive to contribute to the sustainable development of the local community by building opportunities for interaction with the local community and fostering creative, globally minded individuals.



Profile

Company FUJI CORPORATION
Established April 1959
Headquarters 19 Chausuyama, Yamamachi, Chiryu, Aichi
472-8686 Japan
Website <https://www.fuji.co.jp/en/>
Capital 5,878 million yen
Main products SMT pick and place machines,
machine tools



Headquarters

Worldwide Operations

[Plants and Offices]

Headquarters ●●●

Toyota Plant ●●●

480 Tojiri, Hasama-cho, Toyota,
Aichi, Japan

Okazaki Plant ●

1-3 Kitayoko, Eta-cho, Okazaki,
Aichi, Japan

Tokyo Branch Office ●

2nd Floor, PMO Shinagawa, 2-5-10
Konan, Minato-ku, Tokyo, Japan

Osaka Branch Office ●

2nd Floor, Esprit Esaka, 1-17-26
Esaka-cho, Suita, Osaka, Japan

Sendai Sales Office ●

5th Floor, NMF Aoba Dori Bldg.,
2-1-2 Ichiban-cho, Aoba-ku, Sendai,
Miyagi, Japan



Toyota Plant



Okazaki Plant

[Japanese Subsidiaries]

ADTEK FUJI Co., Ltd. ●●●

74-1 Shaguchi, Nishihongo-cho, Okazaki, Aichi, Japan

EDEC LINSEY SYSTEM Co., Ltd. ●●●

331-9, Hamaike, Nishimiyuki-cho, Toyohashi, Aichi, Japan

Fasford Technology Co., Ltd. ●●●

610-5 Shimoimasuwa, Minami-Alps, Yamanashi, Japan

FUJI LINEAR CORPORATION ●●

19 Chausuyama, Yamamachi, Chiryu, Aichi, Japan

[Global Subsidiaries]

Fuji America Corporation ●

Fuji Machine America Corporation ●

FUJI EUROPE CORPORATION GmbH ●

Fuji Machine China Co., Ltd. ●

Kunshan Fuji Machine Mfg. Co., Ltd. ●●●

Fuji Do Brasil Máquinas Industriais Ltda. ●

FUJI INDIA CORPORATION PRIVATE LIMITED ●

FUJI MACHINE ASIA PTE. LTD. ●



ADTEK FUJI Co., Ltd.



EDEC LINSEY SYSTEM Co., Ltd.



Fasford Technology Co., Ltd.



Fuji America Corporation
Fuji Machine America Corporation



FUJI EUROPE CORPORATION GmbH

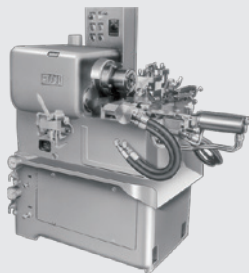


Kunshan Fuji Machine Mfg. Co., Ltd.

沿革

1959

- Founded Fuji Machine Mfg. Co., Ltd.
- Single Function Hydraulic Machine - FS



1978

- Board assembly machine - BA



2003

- Fuji Scalable Placement Platform - NXT

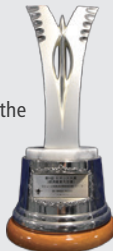


2013

- Stock listed on the First Section of the Tokyo Stock Exchange
- Modular Production Equipment - DLFn

2014

- NXT III won the Japanese METI Minister's Award in the 6th Robot Awards



2018

- Changed the company name to FUJI CORPORATION
- The development of Fuji's SMT pick and place machines was awarded with the 50th Ichimura Prize in Industry for Excellent Achievement
- Formalized Fasford Technology Co., Ltd. as a subsidiary

2019

- FUJI Smart Factory Platform - NXTR PM (Printer)
- NXTR S model (Standard)

2023

- Fuji Flexible Placement Platform - AIMEXR



2024

- Completed new factory building at Okazaki Plant
- Multi Task CNC Lathe - ACUFLEX



1963

- Established branch office in Chicago, U.S.

1964

- Stock listed on Second Section of Nagoya Stock Exchange

1971

- First automated assembly machine

1985

- First in the industry, high-speed chip placer with vision recognition - CP-II

1994

- Ultra high-speed chip placer - CP-6

2005

- Intelligent Screen Printer - GPX

2010

- Standard NC lathes - TN300 and TN400
- Ultra High Density Atmospheric Pressure Plasma Unit - Tough Plasma
- Front-Facing Twin-Spindle Lathes - CSD200, CSD300, and CSD400

2016

- Public Stocker System - Quist
- Mobility Support Robot - Hug
- The Fuji Scalable Placement Platform won the Japanese MEXT Minister's Award in the 2016 National Invention Awards
- Opened THANK, a facility complex

2017

- Established FUJI Innovation Lab. in Silicon Valley in U.S.

2021

- Hug won the Japanese MHLW Minister's Award in the 9th Robot Awards

2022

- Stock listing moved to the Prime Market of the Tokyo Stock Exchange
- FUJI Smart Factory Platform - NXTR A model (Automation)

