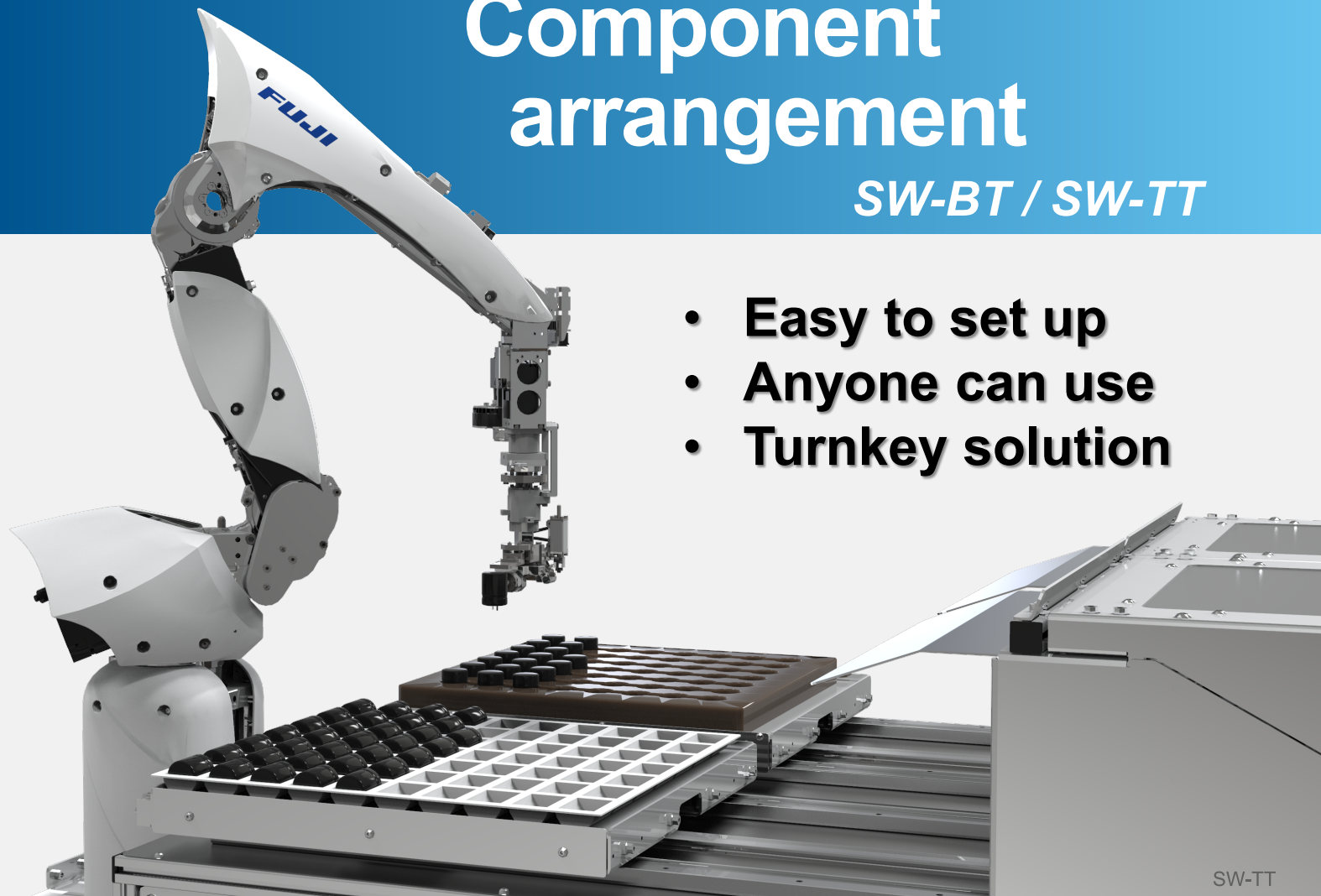


Component arrangement

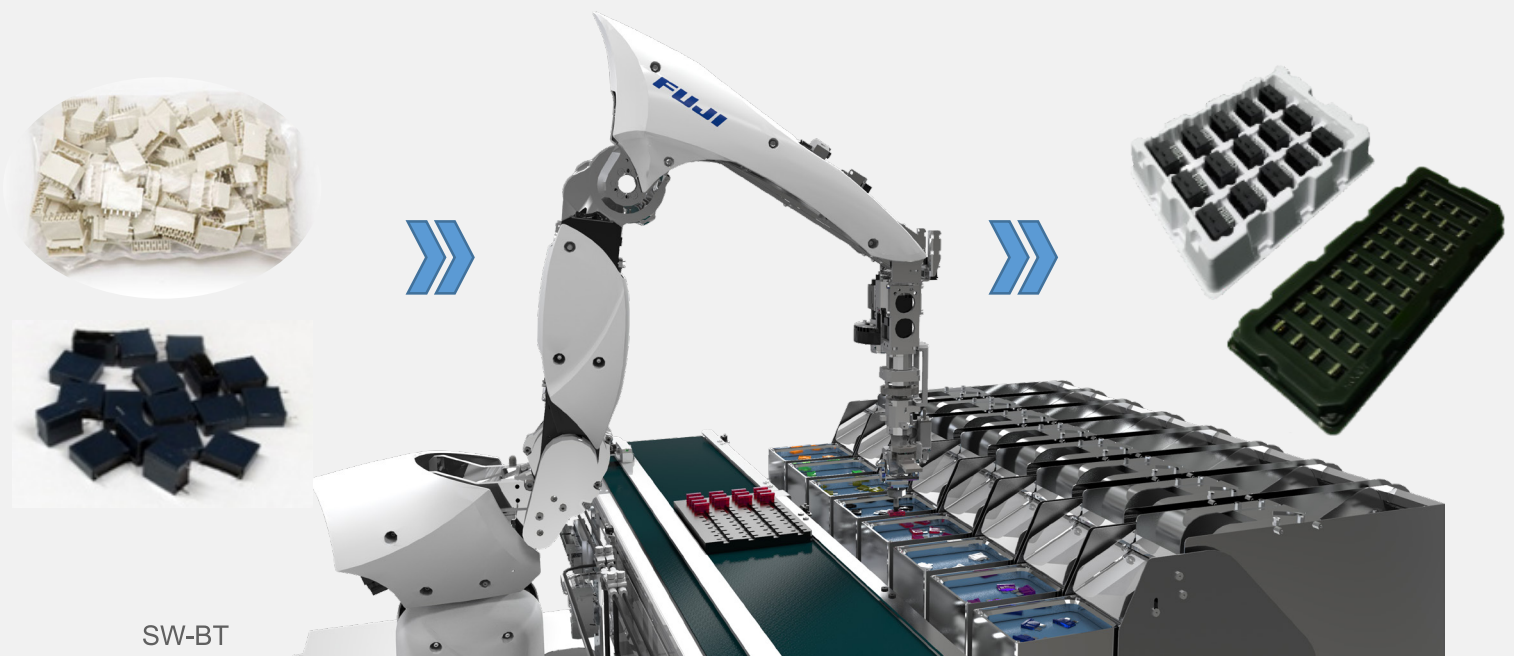
SW-BT / SW-TT

- **Easy to set up**
- **Anyone can use**
- **Turnkey solution**



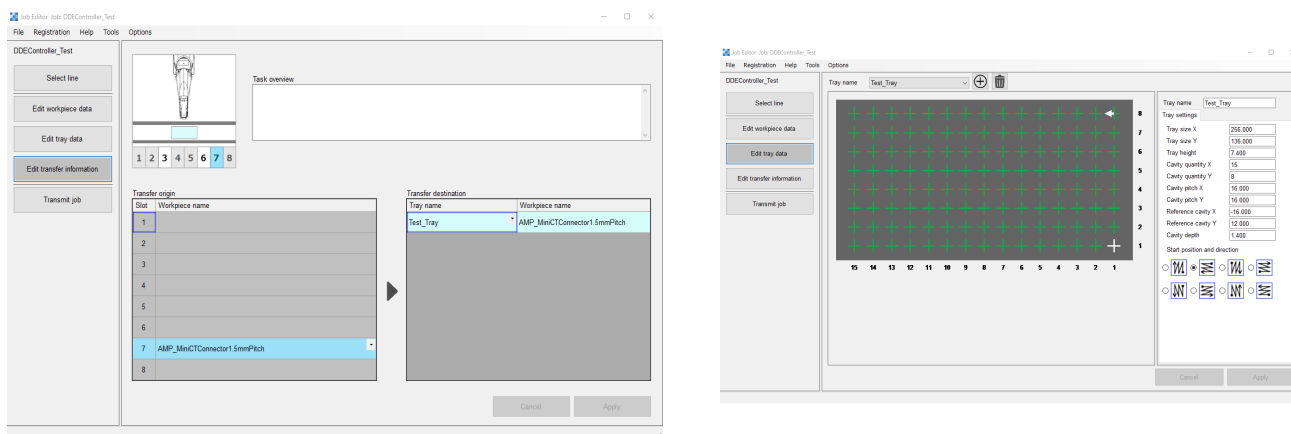
SW-TT

Transfer loosely packaged workpieces to trays for use in placement machines



SW-BT

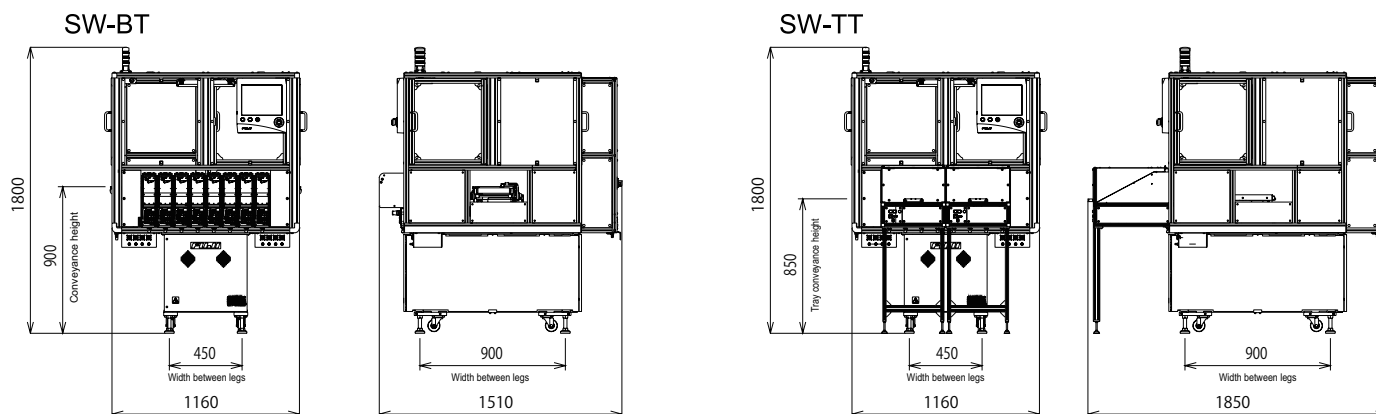
It is easy to program the robot with the dedicated interface



By using the dedicated editor specially designed for this type of operation, it is possible for people who do not even have robot-related experience or knowledge to easily create programs for the robots.

The graphical interface makes it possible to create robot programs intuitively.

Robot Cell specifications and dimensions



	SW-BT	SW-TT
Details	Lining-up loose-supplied workpieces into trays	Lining-up workpieces supplied in basic trays into trays for use in placement machines
Machine dimensions	1160 mm x 1510 mm x 1800 mm	1160 mm x 1850 mm x 1800 mm
Recommended workpiece size	35 mm x 25 mm x 15 mm or less	50 mm x 50 mm x 65 mm or less
Maximum tray size	180 mm x 336 mm x 75 mm	350 mm x 350 mm x 75 mm
Feeder quantity	Up to 8	-
Power	Single phase AC 200 V $\pm 10\%$ Note: It is possible to connect 3-phase 200V power.	
Air pressure used	0.4 MPa or higher	

FUJI CORPORATION

<https://www.fuji.co.jp>

19 Chausuyama Yamamachi, Chiryu, Aichi, Japan 472-8686
Sales Section 4, Headquarters Telephone: +81-566-81-8276

- Details in this leaflet are subject to change without notice due to constant product development.
- Information in this leaflet is current as of November 2019.

© 2019 FUJI CORPORATION. All Rights Reserved.

Agents and Dealers